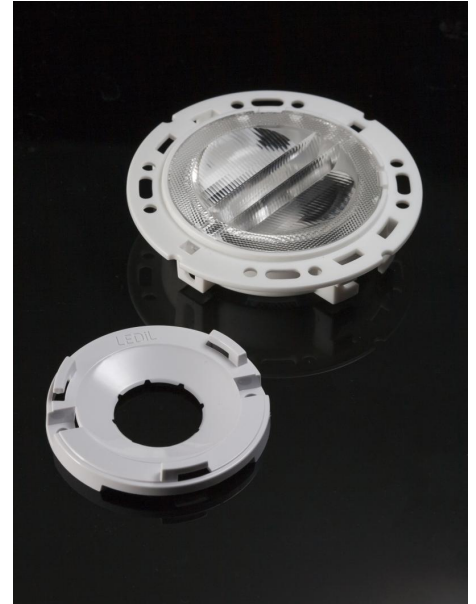


DETAILS

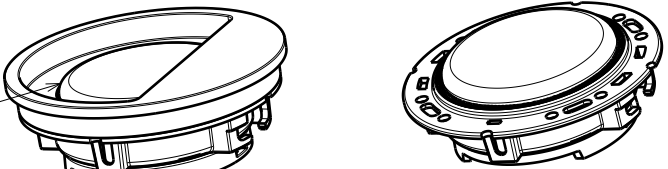
Product Number	FCN15366_RONDA-ZT45
Family	Ronda
Type	Assembly
Color	white
Diameter	69,9 mm
Height	20,66 mm
Style	round
Optic Material	PMMA
Holder Material	PC
Fastening	
Status	sample approved
ROHS Compliant	Yes
Date Updated	10/06/2016



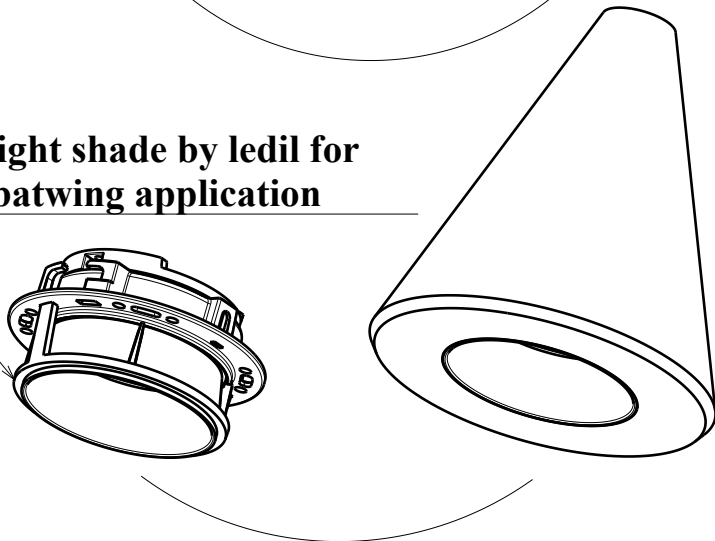
OPTICAL PROPERTIES

LED	Viewing Angle	Light Beam	Efficiency	cd/lm	Connector
VERO13	sim: Asymmetric	sim: Asymmetric	sim: 81 %	sim: 0.000	LEDiL: LEDiL
CXA/B 13xx	sim: Asymmetric	sim: Asymmetric	sim: 88 %	sim: 0.000	Bender Wirth: 448 Typ L1
CLL02x/CLU02x (LES10)	sim: Asymmetric	sim: Asymmetric	sim: 86 %	sim: 0.000	Bender Wirth: 434 Typ L1
CLU710	sim: Asymmetric	sim: Asymmetric	sim: 87 %	sim: 0.000	Bender Wirth: 470 Typ L1
CLU700	sim: Asymmetric	sim: Asymmetric	sim: 87 %	sim: 0.000	Bender Wirth: 434 Typ L1
Mini Zenigata (GW6BM)	sim: Asymmetric	sim: Asymmetric	sim: 86 %	sim: 0.000	Bender Wirth: 452 Typ L1
LUXEON CoB 1202s	sim: Asymmetric	sim: Asymmetric	sim: 87 %	sim: 0.000	Bender Wirth: 452 Typ L1
CXA/B 15xx	sim: Asymmetric	sim: Asymmetric	sim: 87 %	sim: 0.000	Bender Wirth: 441 Typ L1
CXA/B 1816 & CXA/B 1820 & CXA 1850	sim: Asymmetric	sim: Asymmetric	sim: 87 %	sim: 0.000	Bender Wirth: 437 Typ L1
Duris S10	sim: Asymmetric	sim: Asymmetric	sim: 87 %	sim: 0.000	LEDiL: LEDiL
V10	sim: Asymmetric	sim: Asymmetric	sim: 86 %	sim: 0.000	Bender Wirth: 455 Typ L1

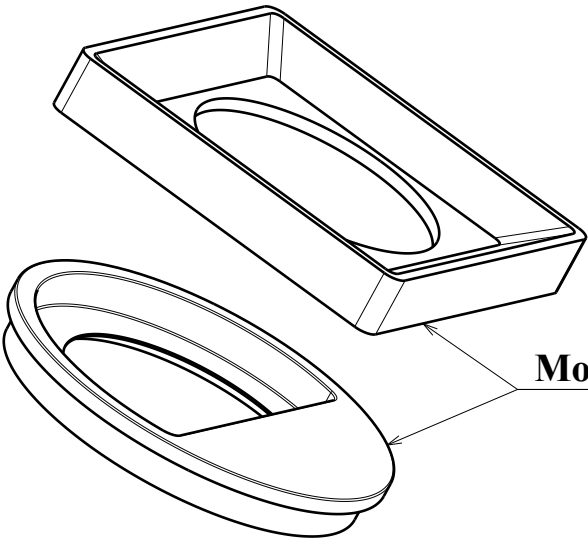
No extra seams on visible side - just lens surface and customer face.



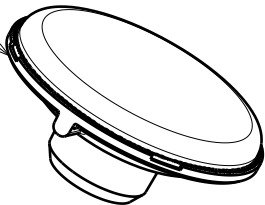
Dark light shade by ledil for office batwing application



Modular look and assembly depth by customer

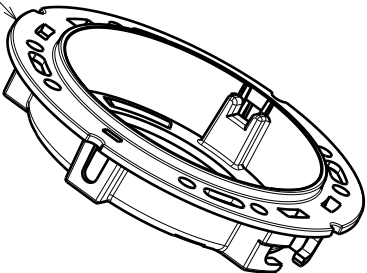


D=49.9

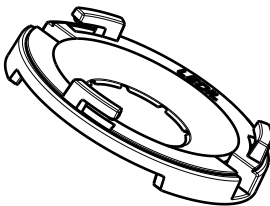


Optic

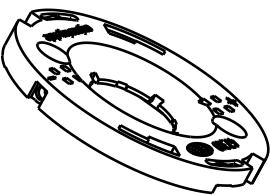
D=69.9mm



2 holder versions for most common connectors

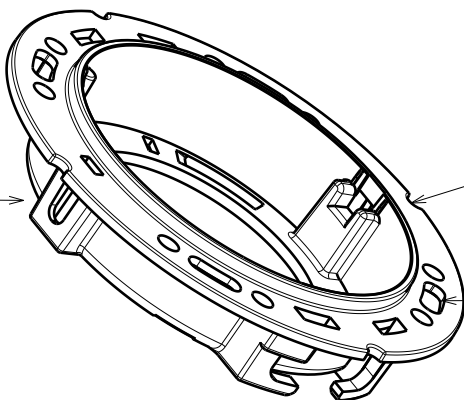


Ledil-clamp / TE / Bender-wirth / other twist and lock socket types (holder A)



BJB and Stucchi (holder B)

Horizontal fix: M3 Nut + bolt



Rotation fix


Vertical fix: M3 Screw / Twist and lock / Snap

Multiple options to adapt customer face on holder without seams

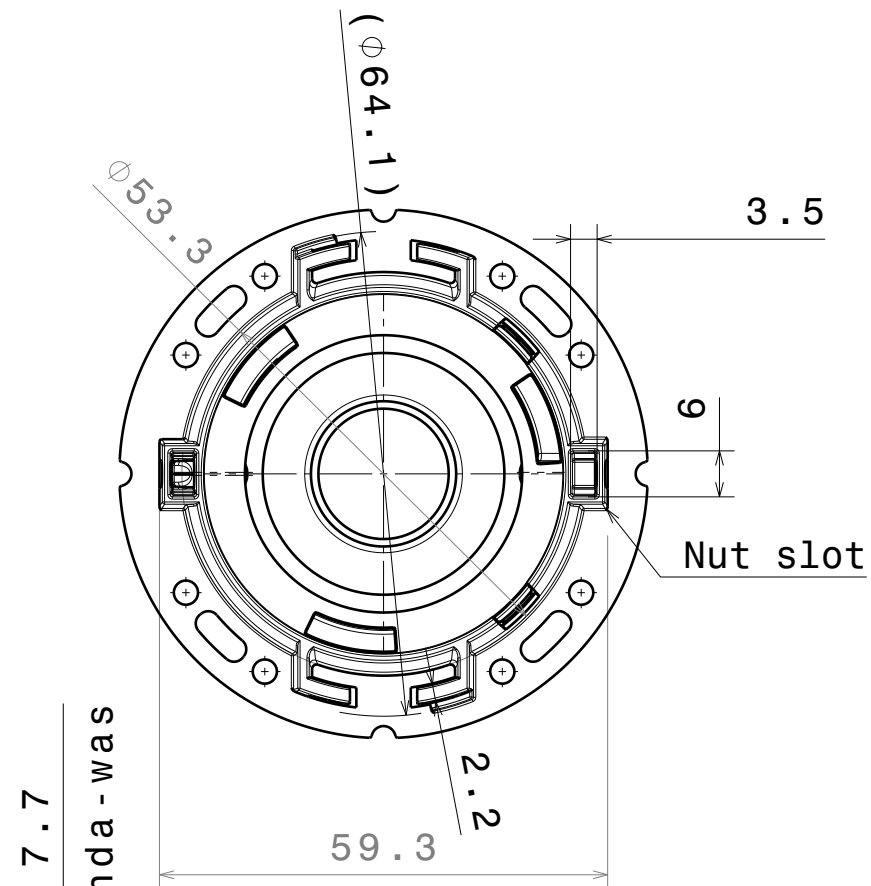


LES size up to ~14mm, see compatibility www.ledil.com

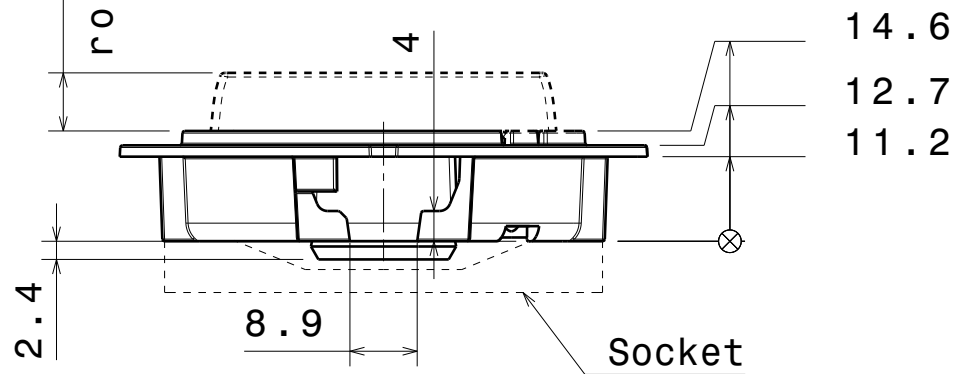
See more details on page 2 and 3

Tolerances if not otherwise shown According to DIN ISO 2768-1 Linear measures: up to 30mm class M, otherwise class C According to DIN ISO 2768-2 Form and position: class L		LEDiL Ledil Oy Salorankatu 10 FIN 24240 SALO Finland	
THIRD ANGLE PROJECTION: 		DRAWING TITLE RONDA-family	
This drawing is the property of LEDiL Oy. It may not be reproduced, copied or communicated without a written agreement with LEDiL Oy.		SIZE A3	PART NUMBER -
		SCALE 1:1	WEIGHT - SHEET 1/3

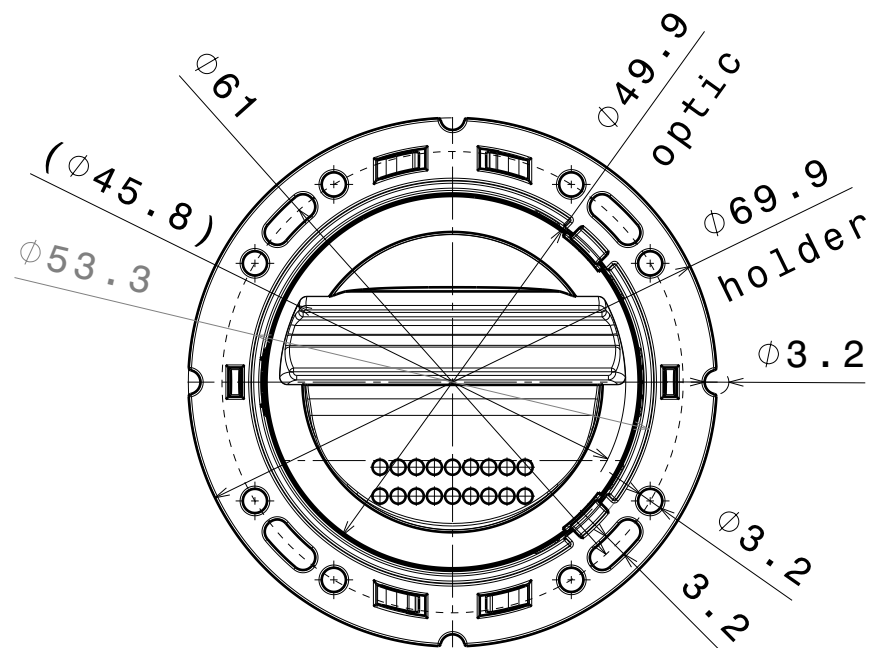
Bottom view



Front view



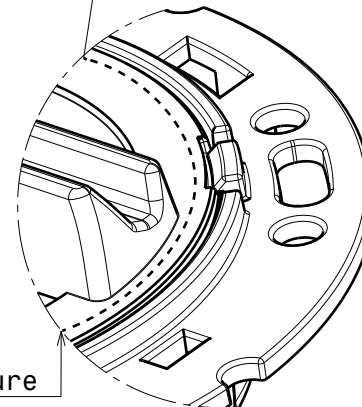
Top view



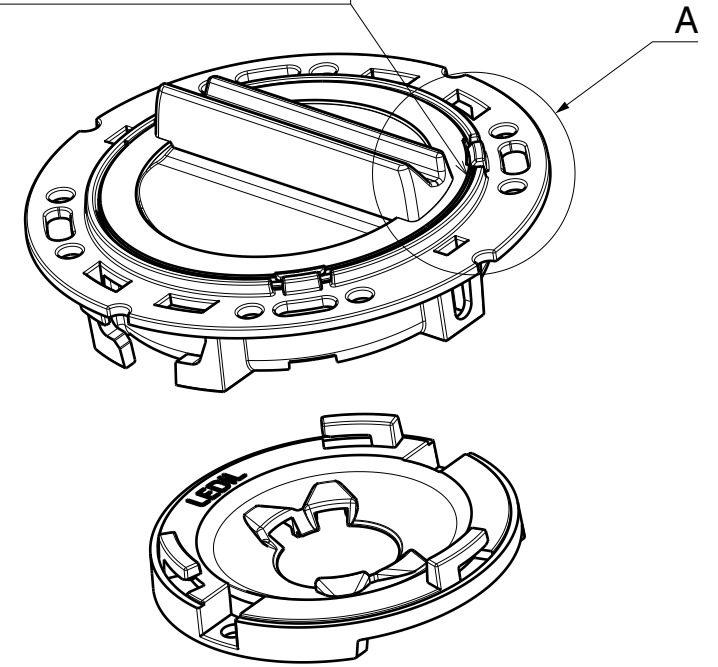
Recommended to bring customer front panel over seam for most solid final product outlook.

Front panel fixture

Detail A



Isometric view

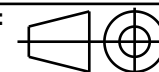


Tolerances if not otherwise shown
According to DIN ISO 2768-1
Linear measures:
up to 30mm class M, otherwise class C
According to DIN ISO 2768-2
Form and position: class L

LEDiL

Ledil Oy
Salorankatu 10
FIN 24240 SALO
Finland

THIRD ANGLE PROJECTION:



DRAWING TITLE

RONDA-family

This drawing is the property
of LEDiL Oy. It may not be
reproduced, copied or
communicated without a written
agreement with LEDiL Oy.

SIZE
A3

PART NUMBER

-

SCALE

1:1 WEIGHT

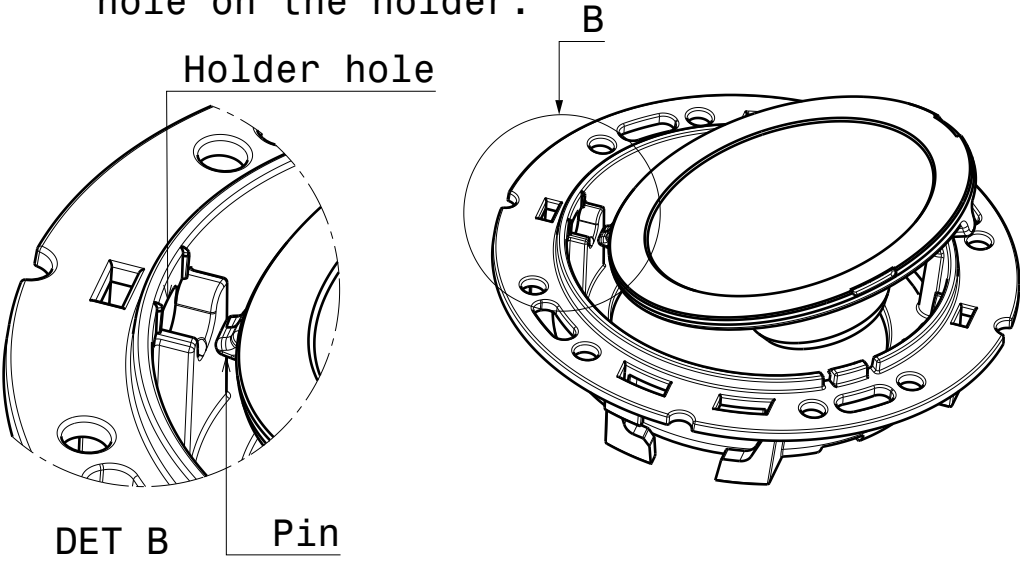
-

SHEET

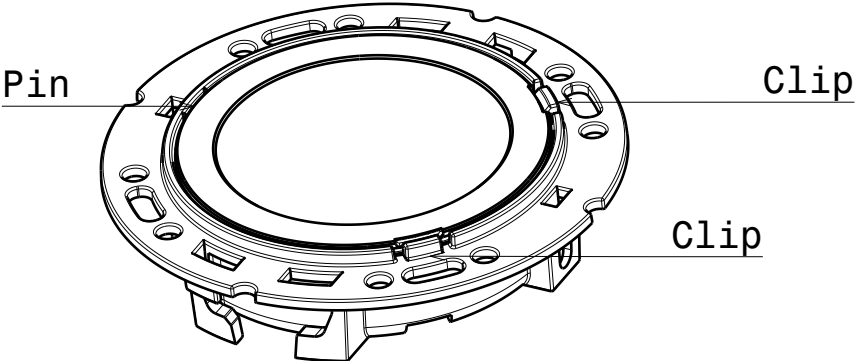
2/3

OPTIC/HOLDER ASSEMBLY

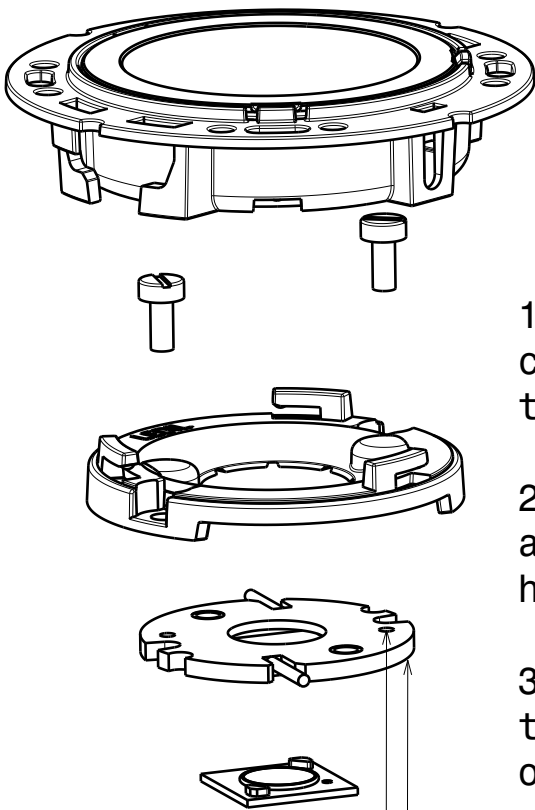
1. Place pin on the side of the lens into relative hole on the holder.



2. Press the lens under clips on the holder, ensuring both clips are fixed.



TYPICAL CONNECTOR ASSEMBLY (including solderless BENDER WIRTH as example)



1. Ensure correct relation of clamp and connector before screwing. Recommended torque 0.6Nm.

2. Assemble LED, BENDER&WIRTH connector and C13658_CLAMP-VER013-18 clamp on heatsink with M3 screw.

3. Attach optic by aligning the holes in the holder with hooks and turning the optic holder clockwise until it locks.

Bender&Wirth model 4xx Typ L1

Align clamp positioning pin with holes in the connector.

Tolerances if not otherwise shown According to DIN ISO 2768-1 Linear measures: up to 30mm class M, otherwise class C According to DIN ISO 2768-2 Form and position: class L		LEDiL Ledil Oy Salorankatu 10 FIN 24240 SALO Finland	
THIRD ANGLE PROJECTION: 		DRAWING TITLE RONDA-family	
This drawing is the property of LEDiL Oy. It may not be reproduced, copied or communicated without a written agreement with LEDiL Oy.		SIZE A3	PART NUMBER -
		SCALE 1:1	WEIGHT - SHEET 3/3

NOTE: The typical divergence will be changed by different color, chip size and chip position tolerance. The typical total divergence is the full angle measured where the luminous intensity is half of the peak value.

GENERAL INFORMATION

- Product series especially designed & optimized for series of LEDs.
- Special care taken to make light distribution as uniform as possible.

Note! Due to use of high power COB's with this product, special attention to proper thermal design is highly recommended. LEDiL has no liability for direct, indirect or consecutive damages arising from the LEDiL products being used outside of the recommended temperature range.